

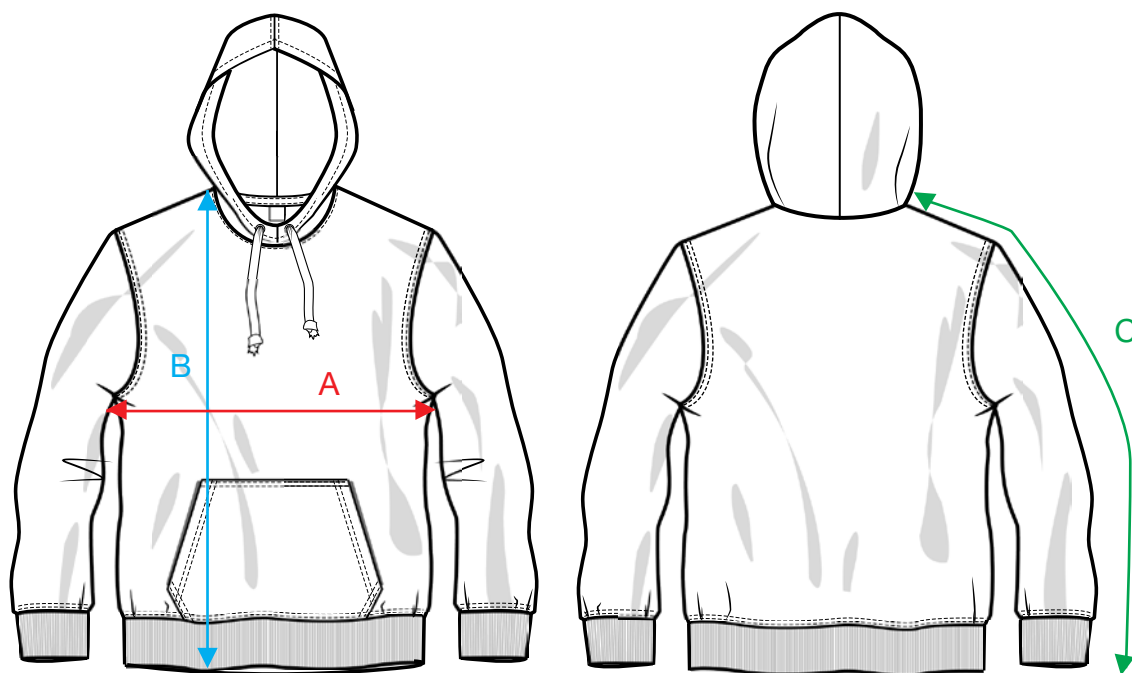
NewWave

TEXTILES

A NEW WAVE GROUP COMPANY

MEASUREMENT SHEET/SIZE SPEC

021054 DANVILLE



FRONT

BACK

MEASUREMENT IN CM	XS	S	M	L	XL	XXL
A - 1/2 CHEST	46	49	52	55	59	63
B - BODYLENGTH FRONT HPS	64	67	70	73	75	77
C - SHOULDER + SLEEVELENGTH	73	76	79	81	84	86

Sizing chart is in centimeters and sizing is subject to a market accepted tolerance. No rights may be derived from this sizing chart.

