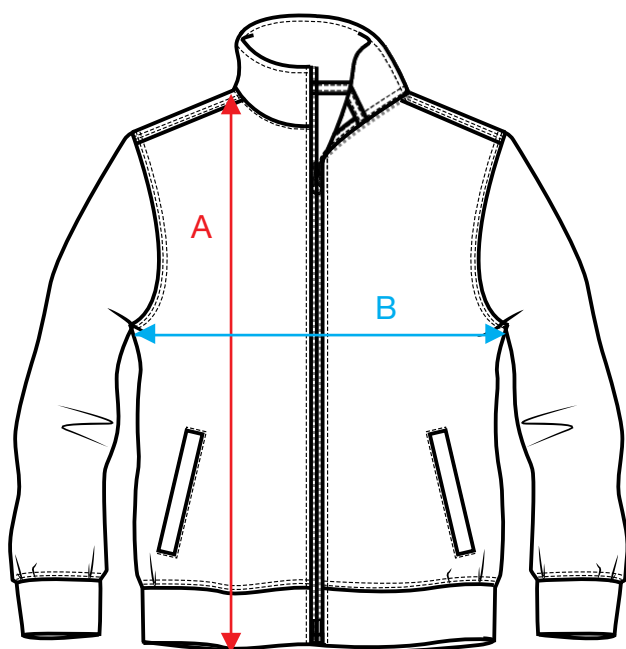
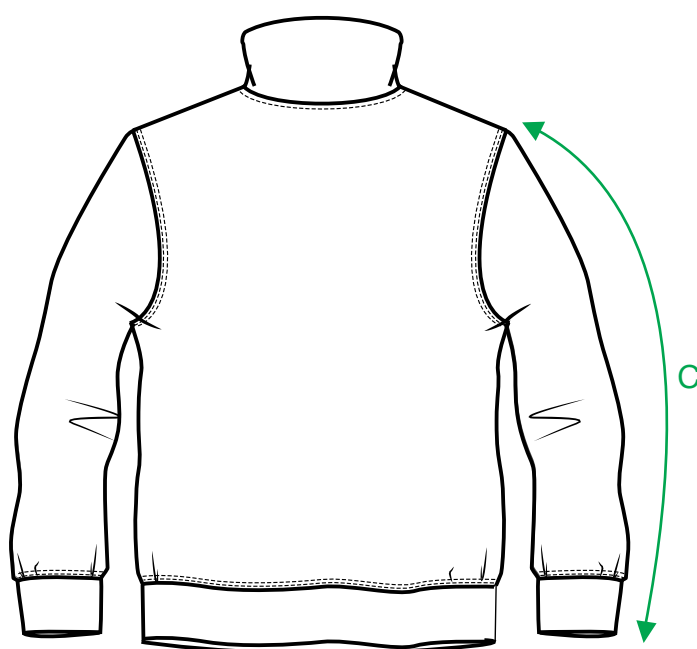


MEASUREMENT SHEET/SIZE SPEC

021028 BASIC CARDIGAN JUNIOR



FRONT



BACK

MEASUREMENT IN CM	90/100	110/120	130/140	150/160
A - BODYLENGTH HPS	45	50	55	60
B - 1/2 CHEST WIDTH	34	38	42	46
C - SLEEVELENGTH	41	47	53	59

Sizing chart is in centimeters and sizing is subject to a market accepted tolerance. No rights may be derived from this sizing chart.

